

Compatibility

All major pool controller brands:
IntelliTouch®
Omnilogic®
AQUALINK®

Titanium Heat Sink

Premium Quality, Water-Cooled
For Maximum Longevity

UL Listed

Simpler installation
and servicing
Quick-Connect Plug

1.5" Threaded Fittings:
The Retro T1 Replacement
Light can be applied into
any 1.5 inch threaded fitting.

retro
REPLACEMENT LED POOL LIGHT



Scan to see more
about the Retro T1

PRODUCTION SPECIFICATIONS

VOLTAGE:	10.5 ~ 13v AC
WATTAGE:	8w
INGRESS PROTECTION:	IPX8
SUITABLE FOR:	Concrete, Vinyl, and Fibreglass Pools
COMPATIBLE:	Extra Safe Low Voltage LiTYARD 2 and LVX Series

LED LIGHT TYPE MULTI PLUS

LED ARRAY:	RGB+W
WAVELENGTH:	Varies
LUMENS:	375lm
COLOUR RANGE:	7 Colours + 4 Shows
POOL CONTROLLERS:	Compatible with most major brand pool controllers



© Niche and Pool Controller brands
mentioned remain copyright of
respective manufacturers

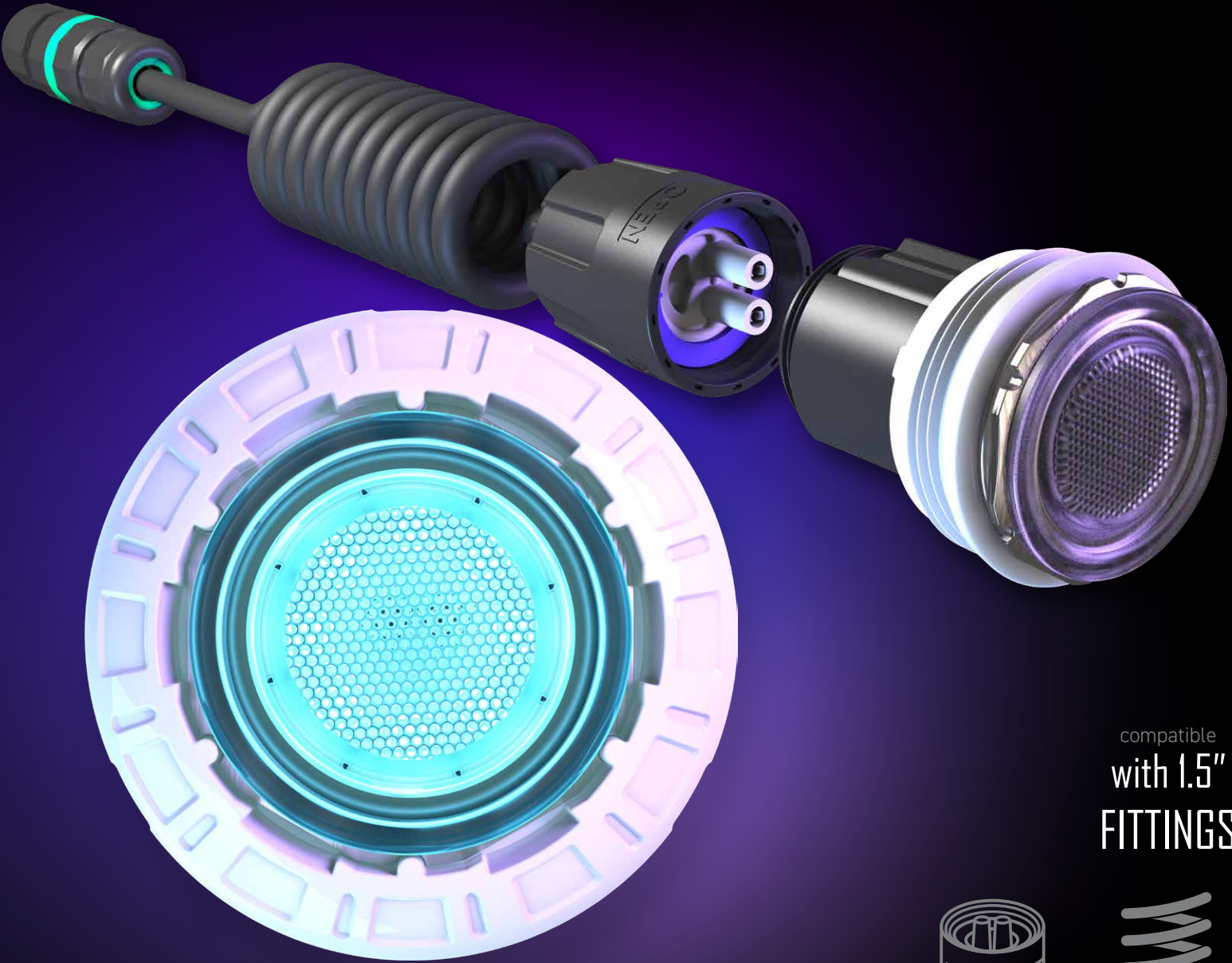


Toll Free: 1-855-881-0889
Web: www.spalectrics.ca

Manufactured in Australia by



20250312



compatible
with 1.5"
FITTINGS



QUICK-CONNECT
PLUG



CURLY CABLE
DESIGN

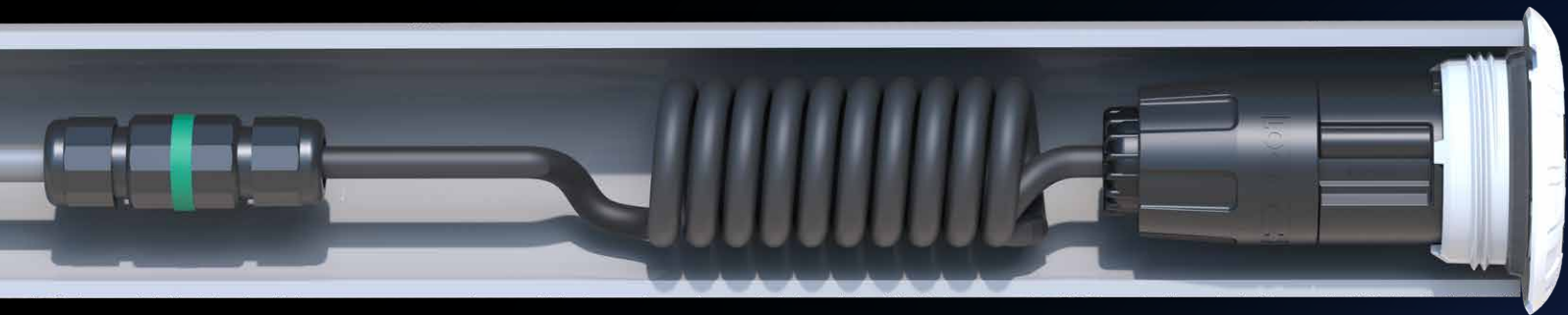
T1

UNIVERSAL 1.5" REPLACEMENT POOL LIGHT

Industry Leaders in Pool Lighting Solutions

T1

Applicable in any 1.5in Threaded Fitting

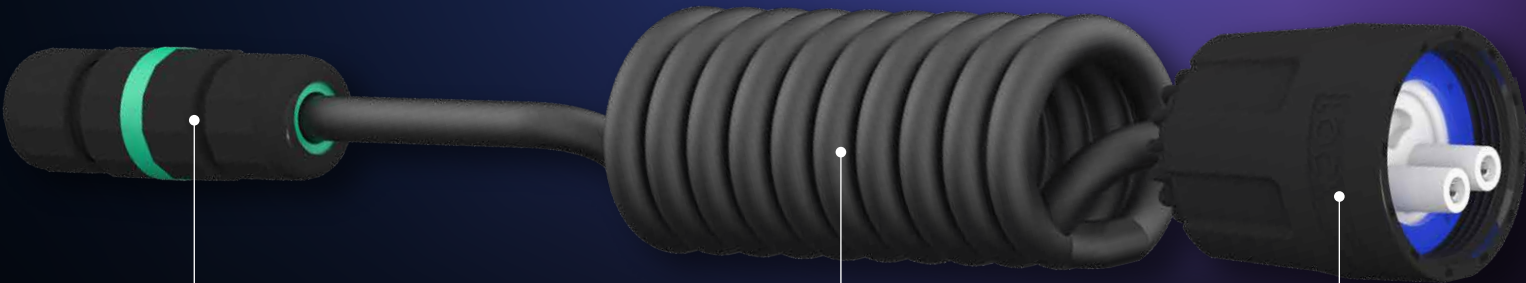


Flexible Applications

Both small **Concrete** and large **Vinyl** or **Fibreglass** rim sizes included in each Retro kit and can be easily swapped to suit any requirement.

Simple Installation

Easily wire the existing cable into the included **Cable Joiner**, making installation and service quick and simple.



Secure Fit

Tighten the **Threaded Sleeve** to the 1.5" fitting using the **Light Locking Tool**, for an easy, secure install. The **Threaded Sleeve** can also be removed to switch to the desired rim.



Extra Safe
Low Voltage
12VAC

Innovative Plug & Cable

The **Curly Cable** design, paired with the UL Listed **Quick-Connect Plug**, allows the light to be taken out, above the water line, without the need to pull the cable through the conduit.

Retro T1 revolutionizes the pool industry by introducing a pencil-light concept with ease of installation and service in a retro-fit solution.

retro
REPLACEMENT LED POOL LIGHT